



Electronic
Safe
Solutions

ZENITH
by Elsafe®

FEATURES

- : Industry-leading audit trail.
- : Audit trail with in-room print-out option.
- : Flash-RAM memory.
- : ADA compliant telephone-style keypad.
- : 4-digit guest code.
- : LED display for clear visible numbers.
- : Backlit display.
- : Push button to close door.
- : Powered with 5 LR6/AA batteries.
- : Easy external battery change.
- : Laptop compatible up to 17".
- : Serviced by Safelink or PinKey PLUS.
- : IR communication.
- : Anti-tamper labyrinth.
- : 18mm solid steel bolt locking mechanism.
- : Inside carpet.

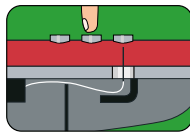
Zenith In-Wall by Elsafe Stay Safe

Zenith In-Wall Safe by Elsafe is the ideal solution for hotels that need to maximize limited guestroom space. Zenith In-Wall Safe fits perfectly on any cupboard, armoire or closet wall as well as on the guestroom wall.

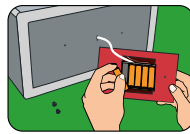
It requires minimal space, thus becoming the obvious choice for hotels where optimizing space is important. This safe is also ideal for business use as it accommodates laptop computers.

Zenith In-Wall Safe by Elsafe meets the same security standards and utilizes the same electronic platform as all Zenith series safes.





ANTI-TAMPER LABYRINTHS OFFER HIGHER PROTECTION AGAINST MANIPULATION.



QUICK BATTERY CHANGE WITHOUT HAVING TO OPEN THE SAFE. IT SAVES TIME AND MONEY.

Measurements		Zenith In-Wall
Outside H/W/D Incl. keyboard	mm in	469/418/170 18 ¹ / ₂ /16 ¹ / ₂ /6 ⁵ / ₈
Inside H/W/D	mm in	400/350/95 15 ³ / ₄ /13 ³ / ₄ /3 ³ / ₄
Door dimensions H x W	mm in	390/300 15 ¹ / ₂ /11 ⁴ / ₅
Internal volume	litres cu ft	17.5 0.61
Weight	kg lb	20 44

H/W/D: Height/Width/Depth

- : Override: SafeLink and PinKey PLUS
- : Steel thickness: Door: 6 mm / Body: 2 mm
- : Fastening method: Sidewalls: 4 holes (secured into wall studs)



SafeLink:

Elsafe SafeLink helps you set up and service your Zenith safe in seconds. With Zenith by Elsafe you can even print a detailed 100-event log from the safe memory.



PinKey PLUS:

Elsafe PinKey PLUS is a compact and powerful electronic PIN-code protected, non-resident master key to securely override Elsafe in-room safes. This allows for easy day-to-day safe operations.

Additional Zenith safe models:

Zenith by Elsafe is also available in the following models:



Drawer Safe



Floor Safe

Contact us:



ASSA ABLOY

Stay Smart