

PinKey PLUS by Elsafe

The compact and powerful tool that manages your day-to-day safe operations

The PinKey PLUS, a service tool for small and mid-size hotels, is an easy operating, high security device that fills all the needs of a safe service tool. Advanced options allow users to read event logs from safes, carry-out emergency openings as required and commission safes quickly and securely on site.

Furthermore, the PinKey PLUS provides full password protection with up to 25 named staff passwords. PinKey PLUS security management is more secure than the traditional master key override found in other manufacturer's systems, maintaining the high security standards that Elsafe is known for throughout the industry.



FEATURES:

- Secure, easy-to-use and convenient service openings
- Compatible with all Xtra II, SENTINEL II and Infinity II Elsafe safe models
- Intuitive default driven software and set up
- Commission safe without engineer assistance
- Full download of safe audit trail through PinKey PLUS
- Printable audit trail via PC printer
- Every use of PinKey PLUS is recorded in safe audit trail
- PinKey PLUS controls up to 25 individual staff users
- Pin code protected service openings
- Installs room # and the service code and sets time with PinKey PLUS
- Service opening of safe via PinKey PLUS
- Cost effective and durable
- For latest models, the PinKey PLUS also have IR functionality built-in for use with SafeLink. PinKey PLUS can be used on a daily basis, but the unit can also be used with SafeLink when carrying out more advanced operations

SPECIFICATIONS

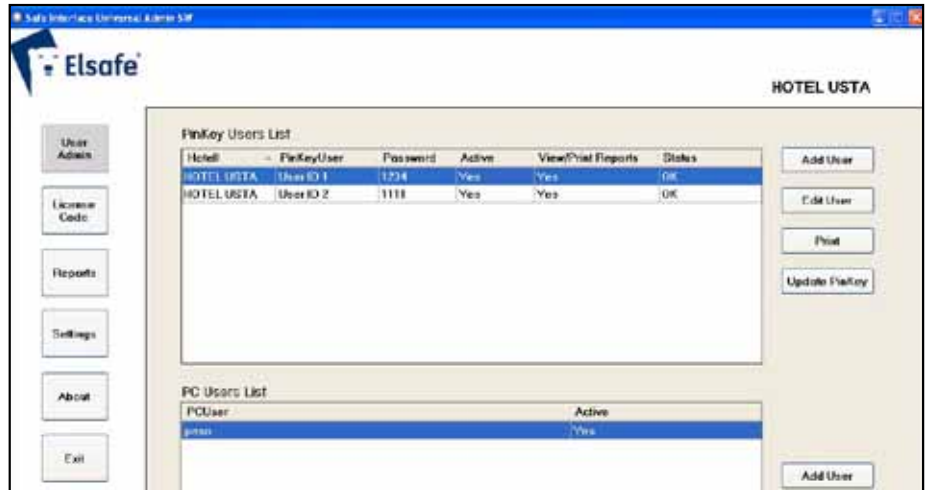
User administration and event read-out

Add new user

1. Go to "User Admin."
2. Click on "Add User."
3. Enter username and press OK.
4. Random PIN code is generated.
5. Done!

Edit user

1. Go to "User Admin."
2. Select the user to edit.
3. Press "Edit user."
4. Change the information and press OK.
5. Done!



Read out events from Safe

1. Insert PinKey PLUS into safe.
2. Press "Lock" button.
3. Download of events completed. (Events can now be viewed and printed in Safe Interface Universal Administration Software.)
4. Done!



PIN Code Management

There are three ways to manage users and PIN codes:

1. Pre-programmed with maximum of 2 PIN codes. PinKey works out of the box.
2. Managed by authorized business partner, max 25 PIN codes. PinKey needs to be set-up by distributor, with the help of SafeLink Interface Universal Administration software and docking station.
3. Managed by the hotel, max 25 PIN codes. PinKey needs to be set-up by hotel staff, with the help of SafeLink Interface Universal Administration software and docking station.

Commissioning Safes

When connecting a PinKey in Commissioning Mode to a safe, three operations can be performed:

1. Adjust Safe time if different than PinKey PLUS time.
2. Transfer correct service code to the safe.
3. Room number to safe memory.

All rooms commissioned will be stored in a logfile in the PinKey PLUS. This logfile can be viewed and printed in the SafeLink Interface Universal Admin software.

The compact and powerful tool to manage your day-to-day safe operations

Contact us:



ASSA ABLOY

VingCard Elsafe AS

P.O. Box 511 • 1522 Moss • Norway

Tel: +47 69 24 50 00 • Fax: +47 69 24 50 50

E-mail: info@vcegroup.com • www.vcegroup.com