

Elsafe Zenith Drawer

Electronic Safes

The choice of in-room electronic safes becomes easy when you can choose Zenith to secure travelers belongings. Zenith has advance security, with the industry's leading audit trail system that allows you to print out comprehensive report on all safes activities.

Elsafe Zenith Drawer is the ideal electronic safe that provides superior design flexibility, allowing placement inside drawers, cupboards or anywhere in the room that is most accessible and easy to use.

FEATURES

- : REACH, RoHS and Prop 65 compliant
- : Industry leading audit trail (500 events)
- : Information stored in non volatile memory
- : Reprogrammable configurations
- : ADA (Americans with Disabilities Act) compliant telephone style keypad
- : 4-digit guest code
- : LED display for clear visible numbers
- : Unique error and service codes on safe display
- : Green backlit keypad
- : Internal light
- : Remember PIN code for re-lock
- : Powered with five (5) AA batteries
- : Low battery warning
- : Easy external battery change
- : Spring loaded door
- : Accommodates up to 17" laptop in certain models
- : Serviced by service tablet or laptop with an interface cable and unique service code
- : Anti-tamper labyrinth
- : Internal carpet
- : Unique triangular locking bolt reinforcement
- : Easy maintenance
- : 18 mm solid bolt locking mechanism
- : Heavy duty sliders for smooth and safe drawer movement (Pull Out Safe)



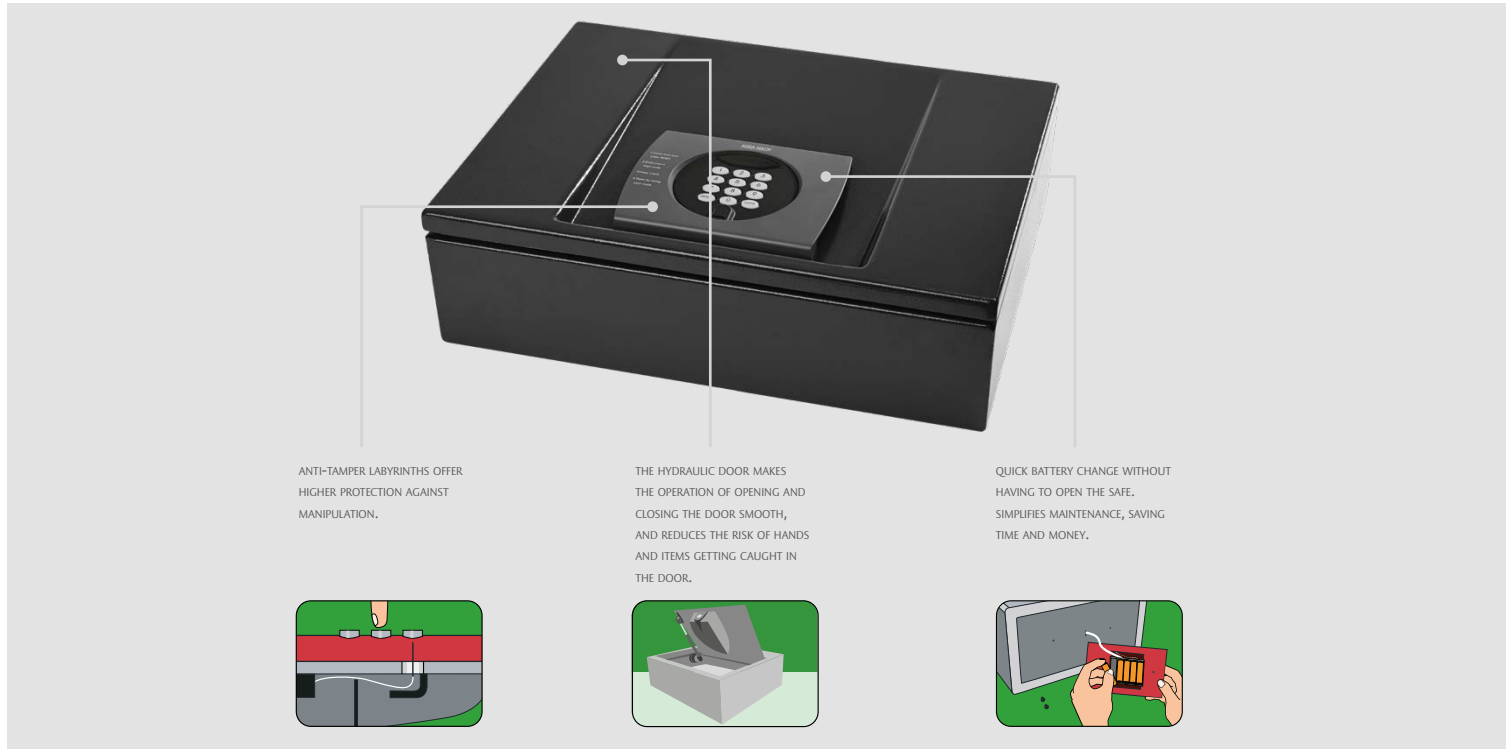
Optional features

- : Anti tamper switch
- : Rental mode by activation code
- : Power outlet inside the safe
- : Customization on steel box color or reduced depth

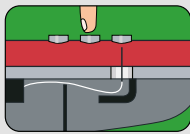
ASSA ABLOY
Global Solutions

The global leader in
door opening solutions

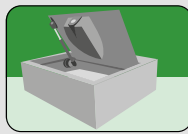
SPECIFICATIONS



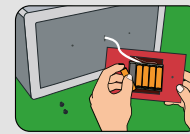
ANTI-TAMPER LABYRINTHS OFFER HIGHER PROTECTION AGAINST MANIPULATION.



THE HYDRAULIC DOOR MAKES THE OPERATION OF OPENING AND CLOSING THE DOOR SMOOTH, AND REDUCES THE RISK OF HANDS AND ITEMS GETTING CAUGHT IN THE DOOR.



QUICK BATTERY CHANGE WITHOUT HAVING TO OPEN THE SAFE. SIMPLIFIES MAINTENANCE, SAVING TIME AND MONEY.



Elsafe Service Tools

A service tablet or a laptop is used with an interface cable and a unique service code. The service tool is also utilizing a software called Safelink for Windows for synchronizing programming between the service tools and safes. For instance, to securely override, uploading programs, change settings or transfer data to the electronic safes.



Power Outlets

Optional internal power outlet in different types (EU, UK, US, or Universal with USB).



PinKey

PinKey is a compact electronic PIN code protected key to securely override and service Elsafe safes. This service tool must be combined with a USB docking cable and the Admin software to commission, service open a safe and print out events.



	Color option 1	Color option 2	Color option 3
Body Color	Black Gray RAL 7021	Ivory RAL 1015	White RAL 9003
Front	Black Gray RAL 7021	Ivory RAL 1015	White RAL 9003

*Measurements		Zenith 12	Zenith 15	Zenith Top Open 17	Zenith Pull Out
Outside H/W/D Incl. keyboard	mm	136 / 375 / 290	134 / 400 / 350	134/460 / 350	191/460/466
	inches	5 ²³ / ₆₅ / 14 ⁴⁹ / ₆₄ / 11 ²⁷ / ₆₄	5 ⁹ / ₃₂ / 15 ³ / ₄ / 13 ¹³ / ₁₆	5 ⁹ / ₃₂ / 18 ¹ / ₈ / 13 ¹³ / ₁₆	7 ¹⁷ / ₃₂ / 18 ¹ / ₈ / 18 ⁵ / ₁₆
Inside H/W/D	mm	62-123,5 / 372 / 287	62-124 / 397 / 347	62-124 / 457 / 347	157/410 / 374
	inches	2 ⁷ / ₁₆ - 4 ⁷ / ₁₆ / 15 ⁵ / ₈ / 13 ¹¹ / ₁₆	2 ⁷ / ₁₆ - 4 ⁷ / ₈ / 15 ⁵ / ₈ / 13 ¹¹ / ₁₆	2 ⁷ / ₁₆ - 4 ⁷ / ₈ / 18 / 13 ¹¹ / ₁₆	5 ¹³ / ₁₆ / 16 ¹ / ₈ / 14 ²² / ₃₂
Internal volume	liters	10,5	15	17	24
	cu ft	0,37	0,53	0,60	0,84
Weight	kg	7,1	8,27	9,4	19,9
	lb	15,65	18,23	20,72	43,9

H/W/D: Height/Width/Depth

Steel Thickness	Zenith Top Open 12/15	Zenith Top Open 17	Zenith Pull Out
Door	2 mm	2,5 mm	4 mm
Body	1,5 mm	1,5 mm	1,5 mm
Back-wall	-	-	1,5 mm

Mounting options	Zenith Top Open	Zenith Pull Out
Sidewalls (into wall studs)	Security Wire	3 holes
Floor mounting plate	4 holes	4 holes