

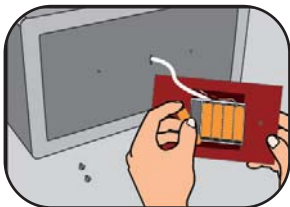
Xtra ADVANCED

Xtra Advanced by Elsafe - the intelligent choice for in-room security.

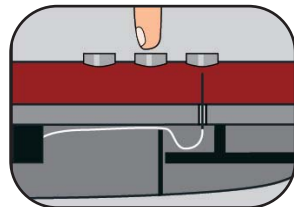
When it comes to guestroom security, Elsafe has always been the choice of hoteliers around the globe. Now we've made that choice even easier, with the Xtra Advanced by Elsafe - advanced security at an economical price. This exciting new safe protects both you and your guests with the industry's leading audit trail system that allows you to print out comprehensive reports of all safe activity - right in the guest room!



Elsafe's convenient handheld SafeLink controller also allows you to perform programming features and emergency openings easily and conveniently. Other features include sleek, contemporary styling; advanced digital electronics; solid steel construction; a unique quick-change battery system; anti-tamper labyrinths; and well-known Elsafe reliability. So add a whole new level of intelligence to your hotel operations. Make the intelligent choice - the Xtra Advanced by Elsafe.



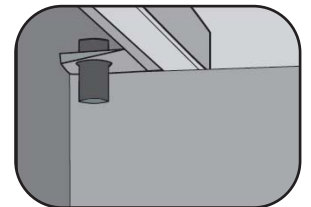
Quick-Change battery system allows for easy access and saves time and resources.



Anti-tamper Labyrinths protect the safe electronics from manipulation.



Spring-loaded door indicates if the door is in open or closed position, avoiding guests leaving the safe open unintentionally.



Solid one-piece construction enhances security and eliminates access to vital components.



Elsafe Safelink

The Elsafe Safelink helps you service & commission your Xtra safe in seconds. Using your Safelink unit and a durable interface cable or Infrared communication, you can set up safes, open accidentally locked safes, and download safe audit trail information with just a few clicks of the stylus. With the Xtra Advanced you can print a detailed 120-event log from the safe memory. If there is any suspicion of theft, this is vital evidence that could help resolve the situation instantly. This can also dramatically reduce fraudulent liability claims, saving you time and money.

Statistics and hotel information is always shown in the audit trail.

All events are listed with exact time and date.

Change of time and date is logged.

After five different incorrect guest codes the safe goes into a countdown. Then it can either be opened with the Safelink during the countdown or opened with user code after thirty minutes.

The guest has entered the code but forgotten to press the lock button.

The Elsafe audit trail can be printed in the room while the guest is present. There is even a field for signature at the bottom.

Hotel name: World Hotel
 Hotel ID: 00008246
 Room No.: 0123
 Safe Model: Infinity
 Serial No.: 4.800.002
 Last Service Open: 23.08.03 01:50 Bob Leash
 Last tamper: Never
 Operation hours: 45
 No. of Lockings: 7
 No. of Serv. Openings: 2
 Readout time: 24.08.03 15:17

24.08.03 15:17 Locked
 24.08.03 15:17 Unlocked
 24.08.03 15:17 Locked
 24.08.03 15:17 Door Time-out
 24.08.03 15:17 Time-out
 24.08.03 15:17 Logoff
 24.08.03 15:16 New Date/Time
 23.08.03 01:50 Old Date/Time
 23.08.03 01:50 Service Opened
 23.08.03 01:50 Logon
 ID: Bob Leash
 22.08.03 12:31 Locked
 22.08.03 08:27 Logoff
 22.08.03 08:27 Service Opened
 22.08.03 08:27 Logon
 ID: Johnny Olden
 22.08.03 08:26 Five Incorrect Codes
 22.08.03 08:26 Incorrect Guest Code: 4444
 22.08.03 08:26 Incorrect Guest Code: 3333
 22.08.03 08:26 Incorrect Guest Code: 2222
 22.08.03 08:25 Incorrect Guest Code: 1111
 22.08.03 08:25 Incorrect Guest Code: 0000
 21.08.03 16:16 Locked
 21.08.03 16:15 Unlocked
 21.08.03 08:35 Locked
 21.08.03 08:34 Time-out
 21.08.03 08:33 Logoff
 21.08.03 08:33 Service Opened
 21.08.03 08:33 Logon
 ID: Johnny Olden
 21.08.03 08:30 Tamper Activated

Hotel Signature: _____
 Guest Signature: _____

The last service opening can never be deleted from the audit-trail.

User did not close safe door properly when trying to lock it. Safe could therefore not lock and returned to open position.

Identification of the person using the Safelink, with full name.

All incorrect guest codes are listed. This might unveil unfaithful staff members trying to guess codes.

If the back-cover has been removed and the safe prepared for future crime, this is logged*.

* If anti tamper function is applicable

Xtra Advanced

Measurements		Advanced 27	Advanced 43
Outside H/W/D	mm	193 / 356 / 265*	193 / 356 / 427*
	in	7 1/2 / 14 / 10 7/16	7 1/2 / 14 / 16 13/16
Inside H/W/D	mm	188 / 351 / 194	188 / 351 / 356
	in	7 3/8 / 13 3/4 / 7 1/16	7 3/8 / 13 3/4 / 13 1/2
Door opening H/W	mm	140 / 295	140 / 295
	in	5 1/2 / 11 5/8	5 1/2 / 11 5/8
Internal volume	litres	13	24
	cu.ft.	0,5	0,8
Weight	kg	7,8	10
	lb	16,8	21,6

* = excl. keyboard handle

Locking mechanism	18 mm solid steel bolt
Locking/access code	4-digit
Closing	Push button
Inside carpet	Yes
Display	4 character LED
Override	Safelink or the Electronic Key
Memory function	Yes, 120 event true audit-trail
Power supply	5 LR6/ AA-cells in keyboard
Steel thickness	Door 4mm, frame/backwall 2mm, body 1,5 mm
Fastening methods	Backwall: 2 bolts / Bottom: 4 holes
Raised dot on number 5	Yes
Backlit display	Yes

With its unique hinge construction and optimized back cover, the slim-line Xtra will accommodate most items that today's demanding travellers need to secure. Still with ample room for portable computers and other large items like video cameras, the Xtra will fit perfectly into your cabinet or furniture, ensuring maximum usage of valuable room space.



Your local contact: