



The robust lock you have come to trust.



Classic is the lock that made the name VingCard synonymous with guest room security. It's strength and reliability has made Classic the preferred lock for quality conscious hoteliers around the world.

With its sleek and elegant design, available with a range of attractive styles and finishes, you are able to match the appearance of your locks with the style and interior of your property.

Classic
by VingCard®

Classic - A STATEMENT OF QUALITY

Since introducing the world's first keycard lock more than 25 years ago, the name VingCard has been synonymous with quality. Our Classic electronic lock series is no exception to this.

Built specifically for the hospitality industry, VingCard's Classic electronic lock is a superior product which is as easy to use as it is to service. Real time technology ensures that guests block out all previous guests the first time they insert their keycard in the lock, at the same time as the lock logs an audit trail of all lock openings in a non-volatile memory. Beside outstanding functionality, a wide range of various finish- and handle options allow you to match the appearance of your locks with the style and interior décor of your property.

Classic locks are available in both magnetic stripe and dual magnetic stripe/smart card versions. To address your hotel's exact functionality requirements, the locks are compatible to both VingCard's front desk systems; the stand alone 2100 PLUS or the powerful Windows® based VISION platform.

Classic - A LONG TERM INVESTMENT

As in most walks of life, quality also pays in the long run when selecting a locking system for your hotel. Durability, reliability and robustness obviously reduce service and maintenance costs and ensure a long product life time. Quality is also your guarantee that the locks will look and feel great year after year.

Designed according to the most demanding ANSI grade 1 standards, VingCard's Classic lock is tested to more than 1 million openings. Based on a heavy duty mortise lockcase and a solid steel and brass escutcheon, the lock is as solid as it is secure. Solid brass handles fastened on the inside of the escutcheon with self-lubricating long life bearings, ensure maximum security and a true quality touch and feel.

The modular construction makes it easy to change and service parts without changing the complete lockset, and due to our future proof philosophy the lock software can at any time be upgraded in the field when needs change without changing or removing any hardware.



Dual Technology option for enhanced functionality

VingCard's Classic lock is available with an optional combo magnetic stripe/smart card reader, allowing the hotel to mix the use of magnetic stripe and smart cards. This combo operation creates a range of additional options that enhance security while helping control costs.

VingCard's combo locks are compatible with current smart card standards and can operate with magnetic stripe cards, basic memory chip cards and advanced processor cards - or any combination of these.

Smart cards may for instance be used for staff while guests are issued less expensive magnetic stripe cards.

Some examples of smart card specific features to be realized are:

- Read-out cards - download audit trails from the locks to a smart card without using a dedicated locklink.
- Service cards - download lock diagnostics such as battery status and reader performance directly to a smart card.
- Audit trail on smart cards - staff keycard can carry a history of where and when the card has been used.
- Auto-card cancellation - keycards can be set to self-cancel after a predefined number of unsuccessful opening attempts to avoid lost cards to be tried in the doors.
- Enhanced card security - smart cards contains a unique protection which prevents card-cloning (CPU cards).
- Enhanced suite solutions - any 5 guest rooms at the hotel can be assigned to a guest keycard when issued.
- Cylinder tamper alarm - the lock's LED will blink red after a cylinder opening until a valid smart card with re-set authorization is inserted.
- Conference leader keycards - issue keycards which will work as normal keycards in the guest room, but automatically set a conference door in passage mode.

Note: A VISION front desk system is required in order to use smart cards with the locks.





Auto Deadbolt option for enhanced security

VingCard's Classic lock may also be supplied with an optional Auto Deadbolt lockcase that will automatically project the deadbolt when the door closes.

VingCard's Auto Deadbolt solution offers excellent added security, it is also designed to minimize the risk of malfunction from site specific aspects such as inaccurate strike installations and poor frames. The following unique features therefore come as a standard :

- Both latch and deadbolt will lock the door independently from each other. The latch/auxiliary latch and the deadbolt are not dependent upon each other for their respective locking functions.
- For extra security, the guest will always be able to turn the deadbolt mechanically into position with the thumbturn through the familiar privacy activation .
- A stepwise activation cycle ensures that the deadbolt will not release prematurely before the door is completely closed
- The Auto Deadbolt lockcase is compatible with VingCard's unique re-codable mechanical override cylinder option

Value added cylinder options

VingCard's classic lock series may also be supplied with an optional mechanical override cylinder, widely recognized among the finest in the industry. Accessed with a metal key that is kept in a secure place, the cylinders can override the electronics in the lock to open the door in case of emergency or vandalism without breaking the door or the lock.

The high quality cylinders offer superior pick resistance through its 7 pin high security profiles and anti pick drivers. In addition the cylinders are carefully constructed with a narrow channel paracentric keyway to maximize security. For extra security, a special high security cylinder fixing option is also available.

VingCard cylinders can be re-coded up to 5 times simply by using a metal key. This means that there is no need to change cylinders or jeopardize security if a metal key is lost. Furthermore, all cylinder emergency openings are recorded in the lock's audit trail.



DESIGN OPTIONS

Offering one of the industry's widest choice of style, finish and handle combinations, a Classic lock can be configured to truly match the design of any property:

Styles & finishes

Standard style



Satin Chrome



Polished Chrome



Satin Brass



Polished Brass



Velour Nickel with polyester



Light Bronze



US Antique oil rubbed



Dark US Antique oil rubbed



Antique Polyester



Black Rugged.

Also available in other RAL colors

Gothic style



Polished Chrome



Polished Brass

Available in all standard finished

Aluminium style - weatherproof coating



Bronze Anodized



Silver Anodized



Gold Anodized

Handle designs



Ship Handle



US Ship Handle



Standard Handle



Gothic Handle



Flair Handle



Knob



Straight Handle



Wing Handle



ANSI 1 Handle



Functional ANSI Handle



Functional EURO Handle



High Tech Handle



Special Handle (45 degrees slant)

Note: Photos may be different from actual finish.

FEATURES

3 hour UL-fire listing for usage on fire doors.

Three-color LED display for low battery warnings, privacy notification and general user interface.

High quality brass escutcheon reinforced by a steel plate for durable aesthetics, strength and durability.

High security heavy duty mortise lockcase available in ANSI or EURO versions with a 3-point anti friction steel latch and case hardened full 1-inch throw (ANSI) deadbolt. The lock is designed to ANSI grade 1 standards.

Panic release - the deadbolt and latch are automatically retracted by the inside handle for easy egress in emergency situations.

Auto Deadbolt option where both the latch and deadbolt lock the door independently from each other.

Advanced and patented cylinder option for mechanical override in case of vandalism and emergency situations. Advanced cylinder fastening and built in pick resistance eliminate return thefts, tampering and unauthorized key cutting.



Future-proof electronics allows the lock software and smart card drivers to be upgraded in the field when needs change without changing or removing any hardware.

Error free card reader, reads cards both during insertion and removal for optimal accuracy.

An audit trail records the lock's last 200 openings including date, time and card user in a non-volatile memory.

Standard magnetic stripe or an optional combo magnetic stripe/smart card reader. The smart card reader works with both less expensive memory chip cards and/or more advanced processor cards.

Wide range of finishes and handles allows you to customize your property

Solid brass handles fastened on the inside of the escutcheon for higher security. Specially designed self-lubricating long-life bearings and handle retainers ensure that the handle always return to horizontal position and signal true quality.

Beside normal operation, the lock can be programmed to open/close automatically at certain times of the day or to be set in "Passage Mode". Typically used for conference rooms, the door will then remain open after insertion of a valid keycard until the card is inserted again.

SYSTEM & SOFTWARE

Free choice of front desk systems



Classic is compatible with both of VingCard's front desk system platforms - 2100 PLUS and VISION.

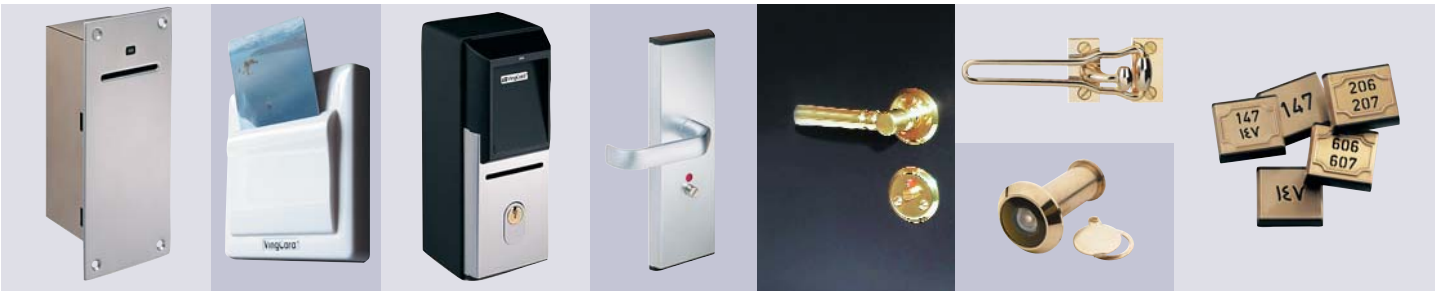
Ideal for small to mid-sized hotels, 2100 PLUS is a self-contained magnetic stripe card based locking system with a powerful array of operational and security features in a compact profile. Carefully designed and engineered to simplify your front desk operations, the system requires minimal footprint on your front desk and no complex PC or network set-up.



For mid-sized to larger hotels, a VISION based system solution offers great power and flexibility. Utilizing a Windows® based software platform and plug and play connectivity, the system offers a menu-driven and touch screen compatible user interface. By combining "who", "where" and "when" definitions into precisely defined user groups, the system provides flexible access management control that is far more powerful than the fixed hierarchical structures of many other systems. Furthermore, VISION offers rich PMS and POS interface options and TCP/IP networking functionality to ensure seamless operation in any hotel environment.

ACCESSORIES

A range of different accessories allows you to create a total locking solution for your property. Remote controllers and elevator controllers enable you to control access to perimeter doors, garages and elevators from the VingCard system. Moreover, a supply of bathroom locks and other back of house mechanical locks can be supplied in the VingCard design to create a true and consistent product match.



Elevator controller

Energy saving unit

Remote controller

Bathroom locks

Top: Door retainer
Bottom: Door viewer

Door number plate

SERVICE

VingCard's sales and service support organization spans the globe. The company philosophy has always been to sell locally and to provide local after-sales support. Currently, the company has a network of offices and distribution companies providing local service and support in more than 80 countries worldwide. VingCard local sales and support companies offer a wealth of hotel industry experience, technical and security advice, training, installations and access to a full range of parts.

Since we are staunchly committed to a partnership with our customers in the hotel industry, we operate 24 hours a day, 365 days a year.



Since pioneering the hotel card lock industry more than 25 years ago, VingCard has supplied nearly half of the total installed base of hotel card locks around the globe. That's more than 3 million locks in over 137 countries! By purchasing VingCard products, you'll get the added peace of mind which comes from working with a true global partner.

VingCard is represented in nearly 100 different countries around the world and is a part of ASSA ABLOY Hospitality, supported by its parent company ASSA ABLOY, the world's leader in providing locking solutions. More than 100 ASSA ABLOY group companies are therefore available to help us as we seek to create a perfect match for your security needs.

<p>ARGENTINA Alfa Sech S.R.L.p Tel.: +54 1 815 0367 E-mail: argentina@vingcard.com</p>	<p>COLOMBIA & BOLIVIA T.S.P Ltda. Tel.: +57 623 3230 / 3256 E-mail: colombia@vingcard.com</p>	<p>INDIA AV&T Access Control Systems Pvt. Ltd. Tel.: +91 11 331 7129 E-mail: india@vingcard.com</p>	<p>MALTA Alberta Trading Limited. Tel.: +356 443 538 E-mail: malta@vingcard.com</p>	<p>SLOVENIA SPICA INT. d.o.o. Tel.: +386 1 568 0800 E-mail: slovenia@vingcard.com</p>
<p>AUSTRALIA, National office, Queensland VingCard Systems Tel.: +61 7 3373 5200 E-mail: australia@vingcard.com</p>	<p>CROATIA Spica Sustavi Zagreb Tel.: +385 1 652 8051 E-mail: croatia@vingcard.com</p>	<p>INDONESIA, National Office, Jakarta PT. Sekurindo Perkasa Tel.: +62 21 6385 8171 E-mail: indonesia@vingcard.com</p>	<p>MEXICO Talleres Escoriaza de Mexico SA Tel.: +52 55 3540 5400 E-mail: mexico@vingcard.com</p>	<p>SOUTH AFRICA (+ Swaziland, Lesotho, Namibia, Botswana, Mozambique, Angola) ASSA ABLOY (SA) (Pty) Ltd. VingCard Elsafe SA Tel.: +27 11 681 4800 E-mail: southafrica@vingcard.com</p>
<p>AUSTRALIA, Victoria Style Finnish (VIC) Pty/Ltd Tel.: +61 3 8574 7999 E-mail: victoria@vingcard.com</p>	<p>CUBA Distribuidora Cimex S.A. Tel.: +53 7 239 530 E-mail: cuba@vingcard.com</p>	<p>INDONESIA, Surabaya PT. Sekurindo Perkasa Tel.: +62 31 531 97 33 E-mail: surabaya@vingcard.com</p>	<p>MOROCCO Elsafe Maroc SA Tel.: +212 4 8843 656 E-mail: morocco@vingcard.com</p>	<p>SPAIN ASSA ABLOY Hospitality Ibérica S.L. Tel.: +34 93 452 9999 E-mail: spain@vingcard.com</p>
<p>AUSTRALIA, Western Australia, Wangara Electro Acoustic Co. Tel.: +61 89 409 7966 E-mail: perth@vingcard.com</p>	<p>CYPRUS P. Mastrois Ltd. Tel.: +357 24 533 683 E-mail: cyprus@vingcard.com</p>	<p>INDONESIA, BALI PT. Sekurindo Perkasa Bali Branch Tel/Fax: +62 361 777 295 E-mail: bali@vingcard.com</p>	<p>NETHERLANDS Burgman Security B.V. Tel.: +31 183 356 789 E-mail: netherlands@vingcard.com</p>	<p>SRI LANKA Charter House Int. (Pty) Ltd Tel.: +94 1 814 940 E-mail: srilanka@vingcard.com</p>
<p>AUSTRALIA, Northern Territory, Winnellie Architectural Hardware Northern Locksmiths Tel.: +61 8 8984 4566 E-mail: darwin@vingcard.com</p>	<p>CZECH REPUBLIC VingCard Czech s.r.o Tel.: +420 2 74 822 585 E-mail: czech@vingcard.com</p>	<p>IRAN Tehran Faror Co. Ltd. Tel.: +98 21 204 9348 E-mail: iran@vingcard.com</p>	<p>NEW CALEDONIA Connectic System Tel.: +687 41 31 55 E-mail: newcaledonia@vingcard.com</p>	<p>SWEDEN ASSA ABLOY Hospitality AB Tel.: +46 31 704 4095 E-mail: sweden@vingcard.com</p>
<p>AUSTRALIA, New South Wales, Sydney CIRE Electronic Systems Tel.: +61 2 9545 2944 E-mail: newsouthwales@vingcard.com</p>	<p>DENMARK & GREENLAND Ruko DK Tel.: +45 44 54 44 54 E-mail: denmark@vingcard.com</p>	<p>IRELAND VingCard Ireland Tel.: +353 1 494 2595 E-mail: ireland@vingcard.com</p>	<p>NEW ZEALAND Levco Agencies Ltd. Tel.: +64 4 471 0316 E-mail: newzealand@vingcard.com</p>	<p>SWITZERLAND Tyco Integrated Systems Tel.: +41 55 618 4343 E-mail: switzerland@vingcard.com</p>
<p>AUSTRIA Hugin Sweda Datensysteme GmbH Tel.: +43 1 610 990 E-mail: austria@vingcard.com</p>	<p>ECUADOR Edimca Durini C.A. Tel.: +593 2 292 1763 E-mail: ecuador@vingcard.com</p>	<p>ISRAEL Hotelo - Computerized System Tel: 972 3 961 1005 E-mail: israel@vingcard.com</p>	<p>NORWAY ASSA ABLOY Hospitality a.s Tel.: +47 69 24 54 00 E-mail: norway@vingcard.com</p>	<p>TAIWAN Dantery Door & Hardware Co. Ltd. Tel.: +886 2 2505 3695 E-mail: taiwan@vingcard.com</p>
<p>BAHRAIN Almoayed Trading & Contracting Tel.: +973 700 777 E-mail: bahrain@vingcard.com</p>	<p>EGYPT BCS Tel.: +20 2 574 4966 E-mail: egypt@vingcard.com</p>	<p>ITALY Vision Srl. Tel.: +39 0473 22 23 50 E-mail: italy@vingcard.com</p>	<p>PAKISTAN XIBERCOM Ltd. Tel.: +92 215 685 420 E-mail: pakistan@vingcard.com</p>	<p>THAILAND ASSA ABLOY Hospitality Ltd. Tel.: +66 2 381 5621 E-mail: thailand@vingcard.com</p>
<p>BANGLADESH UNITY Services Limited Tel.: +880 2 988 1306 E-mail: bangladesh@vingcard.com</p>	<p>FIJI Compac Communications Pacific Ltd. Tel.: +679 312 744 E-mail: fiji@vingcard.com</p>	<p>JAPAN VCE Japan Corporation Tel.: +81 3 3556 1717 E-mail: japan@vingcard.com</p>	<p>PALESTINE Canaan International Group Tel.: +972 2 626 2006 E-mail: palestine@vingcard.com</p>	<p>TURKEY E.M.K. Ltd. Sti Tel.: +90 312 215 9111 E-mail: turkey@vingcard.com</p>
<p>BELGIUM & LUXEMBOURG F. Dupéray S.A. Tel.: +32 (0)2 24 77 911 E-mail: belgium@vingcard.com</p>	<p>FINLAND Abloy OY / VingCard Tel.: +358 9 777 94324 E-mail: finland@vingcard.com</p>	<p>JORDAN Jordan Data Systems Tel.: +962 6 464 2723 E-mail: jordan@vingcard.com</p>	<p>PANAMA BEST Construction & Supply Inc. Tel.: +507 212 0484 E-mail: panama@vingcard.com</p>	<p>UNITED ARAB EMIRATES, KUWAIT & OMAN International Aerodio (Emirates) LCC Tel.: +971 4 324 4116 E-mail: uae@vingcard.com</p>
<p>BRAZIL, Sao Paulo Yale Lafonte Sistemas De Segurança Ltda. Tel.: +55 11 5693 4631 E-mail: brazil@vingcard.com</p>	<p>FRANCE, MONACO, ALGERIA, TUNISIA & NEW CALEDONIA ASSA ABLOY Hospitality s.a.s Tel.: +33 1 41 88 03 03 E-mail: france@vingcard.com</p>	<p>KENYA +Burundi, Cameroon, Central African Republic, Chad, Côte d'Ivoire, Djibouti, Equatorial Guinea, Eritrea, Ethiopia, Gabon, Gambia, Ghana, Guinea, Guinea-Bissau, Ivory Coast, Kenya, Liberia, Mali, Mauritania, Niger, Nigeria, Rwanda, Sao Tome and Principe, Senegal, Sierra Leone, Somalia, Sudan, Tanzania, Togo, Tonga, Uganda, United Republic of Tanzania.) Afratech Ltd. Tel.: +254 11 22 6449 E-mail: kenya@vingcard.com</p>	<p>PERU Pucon S.A. Tel.: +51 1 241 4610 E-mail: peru@vingcard.com</p>	<p>UNITED KINGDOM ASSA ABLOY Hospitality Ltd. Tel.: +44 1189 452 200 E-mail: uk@vingcard.com</p>
<p>BULGARIA Sectoron, Security & Communication Systems Tel.: +359 2 732 832 E-mail: bulgaria@vingcard.com</p>	<p>GERMANY ASSA ABLOY Hospitality GmbH Tel.: +49 180 567 8464 E-mail: germany@vingcard.com</p>	<p>KOREA Kyungwon Corporation Tel.: +82 2 549 4864 E-mail: korea@vingcard.com</p>	<p>PHILIPPINES Pacific Security System Tel.: +63 2 524 7171 E-mail: philippines@vingcard.com</p>	<p>URUGUAY Metalfinish S.A Tel.: +598 82 402 3423 E-mail: uruguay@vingcard.com</p>
<p>CAMBODIA Diethelm Co. Ltd. Tel.: +855 23 883 571 Email: cambodia@vingcard.com</p>	<p>GREECE Singular Hospitality Solutions Tel.: +30 10 33 97 271 E-mail: greece@vingcard.com</p>	<p>LATVIA, LITHUANIA & ESTONIA LATSAT Tel.: +371 781 3311 E-mail: latvia@vingcard.com</p>	<p>POLAND P.T. Lox Sp. Z.o.o. Tel.: +48 22 816 7139 E-mail: poland@vingcard.com</p>	<p>UKRAINE AVANCARD Ltd. Tel.: +380 44 277 0625 E-mail: ukraine@vingcard.com</p>
<p>CANADA ASSA ABLOY Hospitality Ltd/Ltée. Tel.: +1 905 857 7511 E-mail: canada@vingcard.com</p>	<p>GUAM VCE Pacific Corporation Tel.: +1 671 649 0163 E-mail: guam@vingcard.com</p>	<p>LEBANON CHIP Tel.: +961 1 573573 E-mail: lebanon@vingcard.com</p>	<p>PORTUGAL ASSA ABLOY Hospitality Ibérica S.L. Tel.: +351 1 274 9117 E-mail: portugal@vingcard.com</p>	<p>URUGUAY Metalfinish S.A Tel.: +598 82 402 3423 E-mail: uruguay@vingcard.com</p>
<p>CANARY ISLANDS Elsafe S.A. Tel.: +34 928 76 59 99 E-mail: canary@vingcard.com</p>	<p>HAWAII ASSA ABLOY Hospitality Inc. Tel.: +1 808 593 9233 E-mail: hawaii@vingcard.com</p>	<p>MACAU Weng Kei Lock Centre Tel.: +853 922233 E-mail: macau@vingcard.com</p>	<p>QATAR Chip International Tel.: +974 414 242 E-mail: qatar@vingcard.com</p>	<p>USA ASSA ABLOY Hospitality Inc. Tel.: +1 972 907 2273 E-mail: usa@vingcard.com</p>
<p>CHILE Comercial Vision Trading Ltda. Tel.: +562 243 3768 E-mail: chile@vingcard.com</p>	<p>HONDURAS & GUATEMALA Comit S.A. Tel.: +504 553 0728 E-mail: honduras@vingcard.com</p>	<p>MALAYSIA Security Marketing Sdn.Bhd Tel.: +60 3 41 07 11 44 E-mail: malaysia@vingcard.com</p>	<p>ROMANIA ASSA ABLOY Romania SRL Tel.: +40 1 221 2549 E-mail: romania@vingcard.com</p>	<p>VENEZUELA, TRINIDAD & TOBAGO Nordik s.a Sistemas de Seguridad Tel.: +58 2 286 4905 E-mail: venezuela@vingcard.com</p>
<p>CHINA, PRC Beijing VingCard Systems Tel.: +86 (10) 6532 7058 E-mail: china@vingcard.com</p>	<p>HONG KONG ASSA ABLOY Hospitality (HK) Ltd. Tel.: +852 2 316 2200 E-mail: hongkong@vingcard.com</p>	<p>MALACCA Macedonia Sistem Tel.: +389 91 427 154 E-mail: macedonia@vingcard.com</p>	<p>RUSSIA NORWEQ Tel.: +7 095 7283 020 E-mail: russia@vingcard.com</p>	<p>VIETNAM The Gannon Company Tel.: +84 8 822 7347 E-mail: vietnam@vingcard.com</p>
<p>CHINA, PRC Shanghai VingCard East China Tel.: +86 21 6451 8936 E-mail: china@vingcard.com</p>	<p>HUNGARY Regsys Ltd. Tel.: +36 1 237 9000 E-mail: hungary@vingcard.com</p>	<p>MALAYSIA Security Marketing Sdn.Bhd Tel.: +60 3 41 07 11 44 E-mail: malaysia@vingcard.com</p>	<p>SAUDI ARABIA T&B Company Ltd. Tel.: +966 26 080 808 E-mail: saudiarabia@vingcard.com</p>	<p>YUGOSLAVIA SECTRON Security & Communications Systems Tel.: +381 (11) 183 506 E-mail: yugoslavia@vingcard.com</p>
<p>ICELAND Björn Gudmundsson & Co. Tel.: +354 5524 321 E-mail: iceland@vingcard.com</p>	<p>INDONESIA, Jakarta PT. Sekurindo Perkasa Tel.: +62 21 6385 8171 E-mail: indonesia@vingcard.com</p>	<p>MALDIVES S and N Pvt. Ltd. Tel.: +960 31 25 28 E-mail: maldives@vingcard.com</p>	<p>SINGAPORE ASSA ABLOY Hospitality Pte. Ltd. Tel.: +65 748 7227 E-mail: singapore@vingcard.com</p>	<p>ZIMBABWE (+ Congo, Democratic Republic of the Congo, Comoros, Goleiuses, Madagascor, Malawi, Mauritius, Mozambique, Seychelles, Zambia Zimbabwe) Accsys (Pvt) Ltd. Tel.: +263 4 621 596 E-mail: zimbabwe@vingcard.com</p>

Specifications may change without notice

VingCard a.s, P.O.Box 511, N-1522 Moss, NORWAY, Tel.: +47 69 24 50 00, Fax.: +47 69 24 50 50, E-mail: vingcard@vingcard.com, Internet: <http://www.vingcard.com>